



**WELCOME**

**A NEW ERA DEVELOPERS  
MUMBAI**

दुबई या शांघाई जैसे शहर  
में निवेश करना है .....

कब...क्यूँ...कहाँ...कैसे...

**कब** **PROPERTY** में सही वक्त और  
सही जगह पर.

**क्यूँ** परिवार के **FUTURE** के लिए

**कहाँ** दुनिया की सबसे बड़ी और भारत की  
नम्बर 1 **SMART CITY**

**DHOLERA SIR**



NA, NOC & TITLE CLEARED PLOTS  
RESIDENTIAL, COMMERCIAL & INDUSTRIAL.

**MAKE YOUR PROPERTY .....**

# WHERE INDIANS PARK THEIR MONEY



**|| SHREE ||**

**INDIA'S FIRST GREENFIELD SMART CITY**

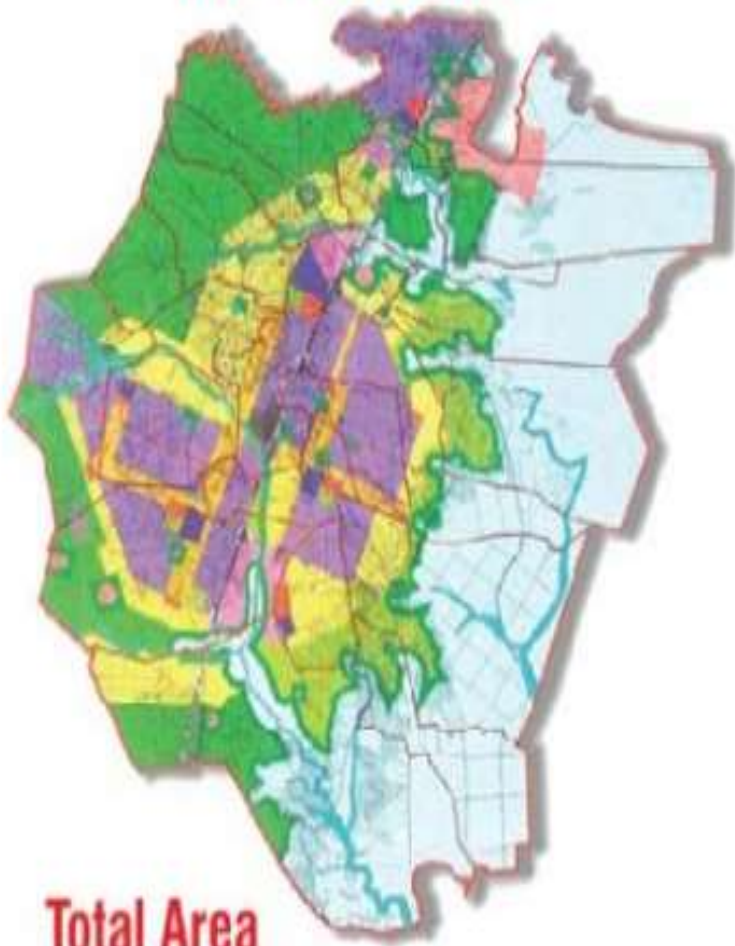
# **DHOLERA SIR**

**( It's Like DUBAI, SINGAPORE & SHANGHAI )**



# DHOLERA SIR ... Bigger than Singapore.

## DHOLERA SIR



**Total Area**  
91,970 Ha ( 920 Sq Km )

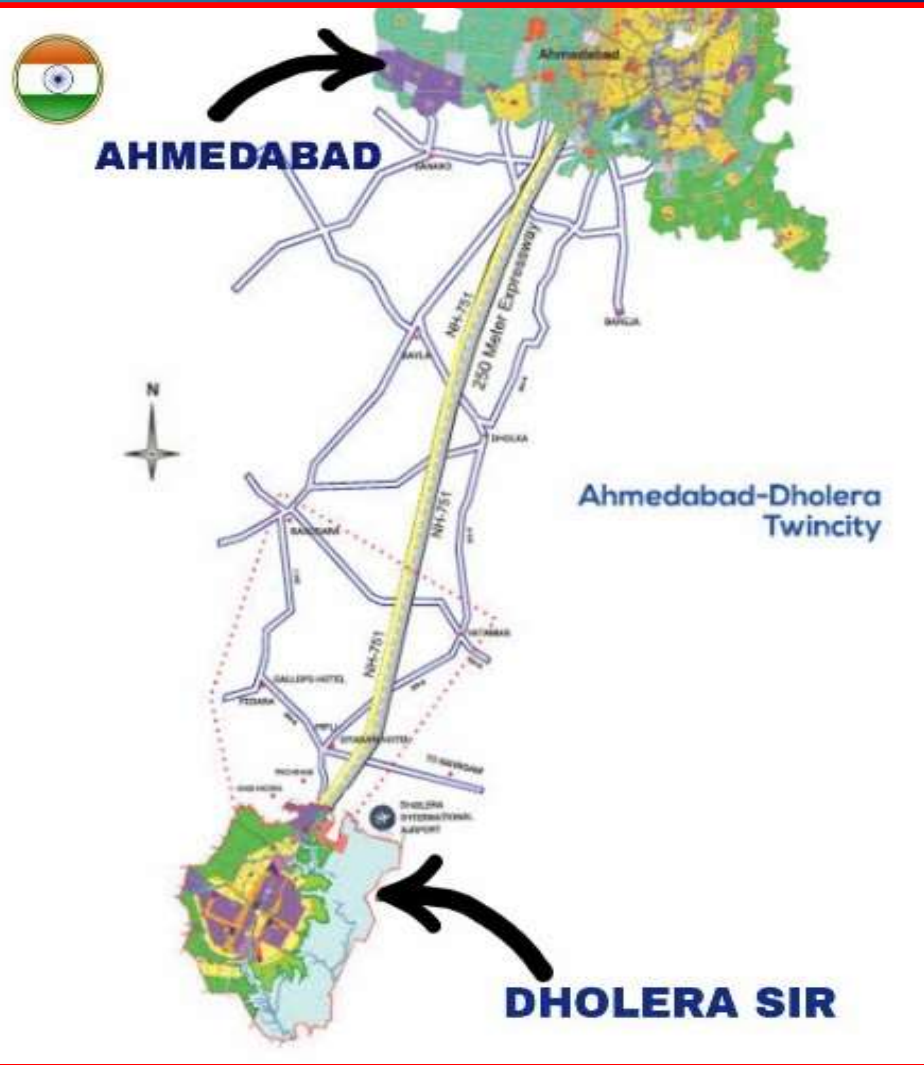
## SINGAPORE



**Total Area**  
72,860 Ha ( 728 Sq Km )



THE  
**Future**  
IS HERE!



# DHOLERA SIR DEVELOPED BY



**WIPRO**

INFORMATION & COMMUNICATION  
TECHNOLOGY



**CISCO**

NETWORK DEVELOPING  
& MANUFACTURING COMPANY

**HALCROW**

INFRASTRUCTURE COMPANY



**IBM**

NETWORK DEVELOPING  
& MANUFACTURING COMPANY





# Dholera



**India's First Green Field Smart City**

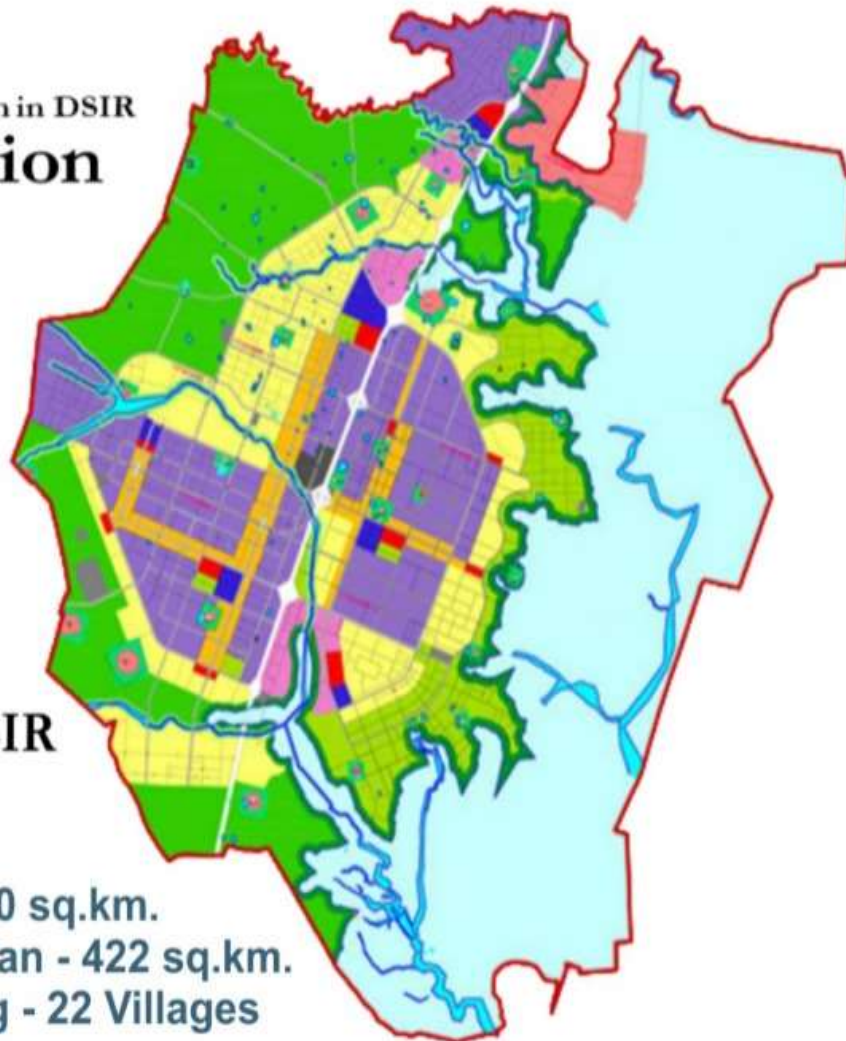
A "Platinum"  
Rated Green City

Resident population in DSIR  
**2.0 million**



Total Jobs in DSIR  
**827 Thousand**

Area - 920 sq.km.  
Development Plan - 422 sq.km.  
Town Planning - 22 Villages



## LEGEND

- DSIRDA BOUNDARY
- T P SCHEME BOUNDARY
- GAMTAL
- RIVER /CANAL
- TALAV / LAKE
- DP PROPOSED ROADS
- T P SCHEME ROADS
- COASTAL REGULATION ZONE
- GREEN SPACE
- RECREATION.SPORTS AND ENTERTAINMENT ZONE
- TOURISM: RESORTS
- VILLAGE BUFFER
- AGRICULTURE ZONE
- STRATEGIC INFRASTRUCTURE ZONE
- CITY CENTRE
- LOGISTICS
- HIGH ACCESS CORRIDOR
- RESIDENTIAL ZONE
- SOLAR PARK
- PUBLIC FACILITIES ZONE
- KNOWLEDGE AND I.T. ZONE
- INDUSTRIAL ZONE

# Dholera



## India's 1<sup>st</sup> "Platinum" Rated Greenfield Industrial City



Plug &  
Play



Social  
infrastructure



Sustainability



Ease of  
business



World Class  
Infrastructure



Ease of  
governance



External  
connectivity



Technology

# Smart Infrastructure (Plug and Play Model)

**dhollera**  
— A NEW ERA —



Road  
Cycle tracks  
Footpaths  
Trees & Plants



Water  
Management  
Smart meters  
SCADA



24X7 Power  
Smart meters  
SCADA



ICT enabled infrastructure  
City WiFi  
Integrated city management



100% domestic  
waste collection  
100% industrial  
effluent collection



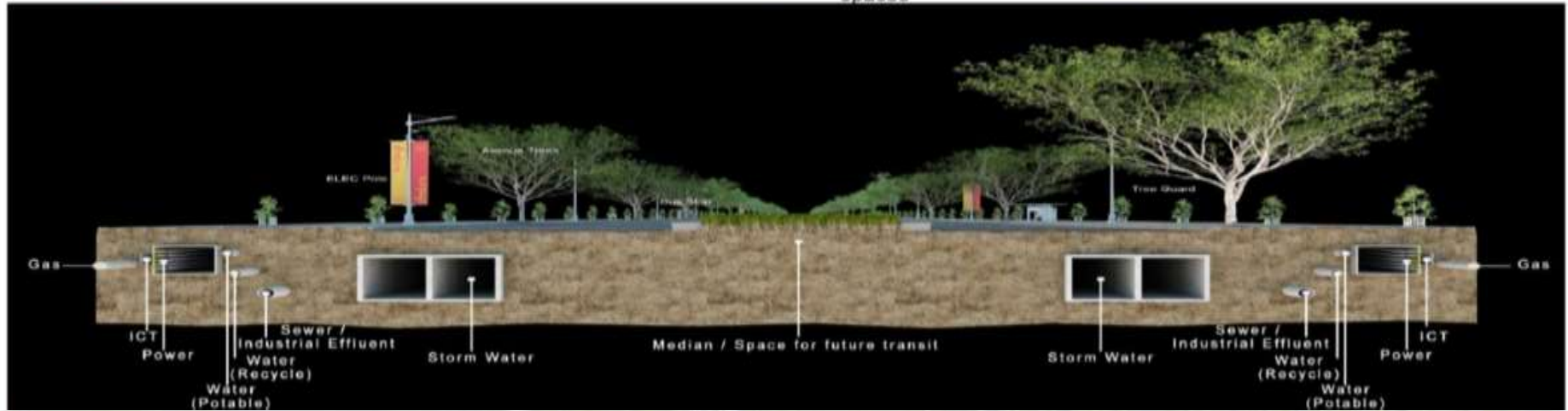
100% recycle and  
reuse of waste  
water



100% rainwater  
collection  
Open storm canal  
with recreational  
spaces



100% waste collection  
Maximum recycling and reuse  
Bio-Methaneation, Incinerator  
Waste to energy



# 30% RESIDENCIAL & 70% COMMERCIAL - INDUSTRIAL



A New Gujarat,  
Within Gujarat

**Lily Dholera Industrial Park**



## WHY DHOLERA SIR IN AHMEDABAD

**GOVT.  
LAND**

- **28,503 Hectares**
- **70,432 ACRE**

**Local  
Land**

- **13,497 Hectares**
- **33,351 ACRE**

**Total  
Land**

- **100% Table Land**

# LOGISTIC SUPPORT FOR **DHOLERA S.I.R.**



**DMIC ROAD TRANSPORT**



**TRAIN TRANSPORT**

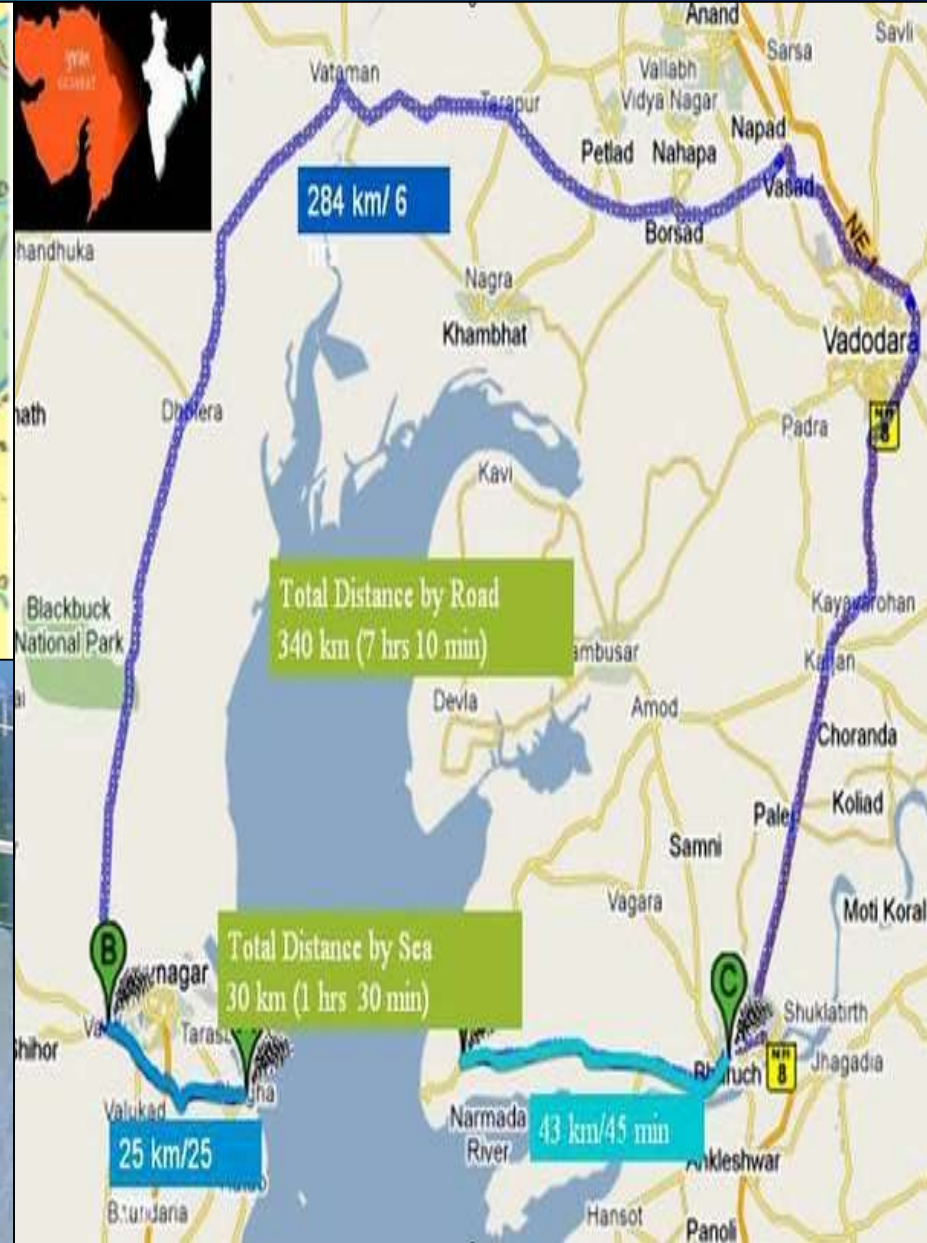


**CARGO & INTERNATIONAL AIR PORT**



**DHOLERA SEA PORT**

# KALPASAR DAM ( DAHEJ TO BHAVNAGAR)



# TATA POWER – SOLAR PARK 2500 MW COMPLETED ( ACTUAL IMAGE )



TATA POWER



for immediate use **PRESS RELEASE**

## Tata Power Renewables Commissions 300 MW Solar plant in Dholera, Gujarat with India's largest single axis solar tracker system

- Plant to reduce carbon emission by 704340 MT/year

**National, 4<sup>th</sup> April, 2022:** Tata Power Renewables Energy Ltd (TPREL), a wholly-owned subsidiary of Tata Power has commissioned a 300 MW project in Dholera, Gujarat. It is India's largest single-axis solar tracker system. The project will generate 774 MUs annually. Along with this, it will reduce approximately 704340 MT/year of carbon emission. The installation entails 873012 nos. of Monocrystalline PV Modules. The project was commissioned well within the stipulated timeline.

With the addition of 300 MW, the renewables capacity in operation for Tata Power will now be 3,400 MW with 2,468 MW of Solar and 932 MW of Wind. Tata Power's total Renewable capacity is 5,020 MW including 1,620 MW of Renewable projects under various stages of implementation.



# TORRENT POWER ( SOLAR ELECTRICITY SUPPLY PLANT )



# ABCD BUILDING - SINGLE WINDOW CLEARANCES



**dholera**<sup>®</sup>  
— A NEW ERA —

**City Infrastructure**

- Power
- Sewage
- Water
- Solid Waste
- Transport
- Gas

- Other Data Integration
- Crime and Criminal Tracking System (CCTNS)
- Law Enforcement
- Regional Traffic Operations



# DHOLERA ABCD BUILDING ( ACTUAL Images )



# Land Allotment Completed



**TATA CHEMICALS LIMITED**

**126 Acres**

10 GWh Li-ion Battery  
Manufacturing Plant



**100 Acres**

2 GW Solar Module Manufacturing  
Plant



**6 Acres**

Power Distribution Network in Dholera SIR



**3 Acres**

Petrol Stations & EV Charging Station

## Consideration of DSIR as potential industrial investment (April 2022) by:



**150 Acres**

Solar Wafer  
Solar Cell & Module



**400 + 300 Acres**

LED FAB  
Semiconductor Facility  
Under the MeITY PLI



**90 Acres**

Aluminum Foil &  
Flexible Packaging



**100 Acres**

5 GW Solar Cell &  
Module Manufacturing  
Plant



**30 Acres**

Wire, Cables &  
Accessories



**15 Acres**



Beverage Company



# AIRBUS-TATA AIRCRAFT MANUFACTURING TO START SOON IN DHOLERA SIR

## C295

56 aircraft for India

- Joint collaboration:**
-  First 16 aircraft assembled in **Seville, Spain**
  -  Remaining 40 aircraft assembled in **India**



**Industrial Footprint:**  
Final assembly line and supply chain in India **with capacity for 12 aircraft per year** operated by TATA with the same standards as Airbus Final Assembly Line in Spain

A truly  
“**Make in India programme**”  
A partnership between:



  
**Versatile and efficient:**  
A real multi-role aircraft. Operation in short and unpaved runways

  
**Indian technology:**  
Indigenous Self-Protection system from Indian BEL/BDL

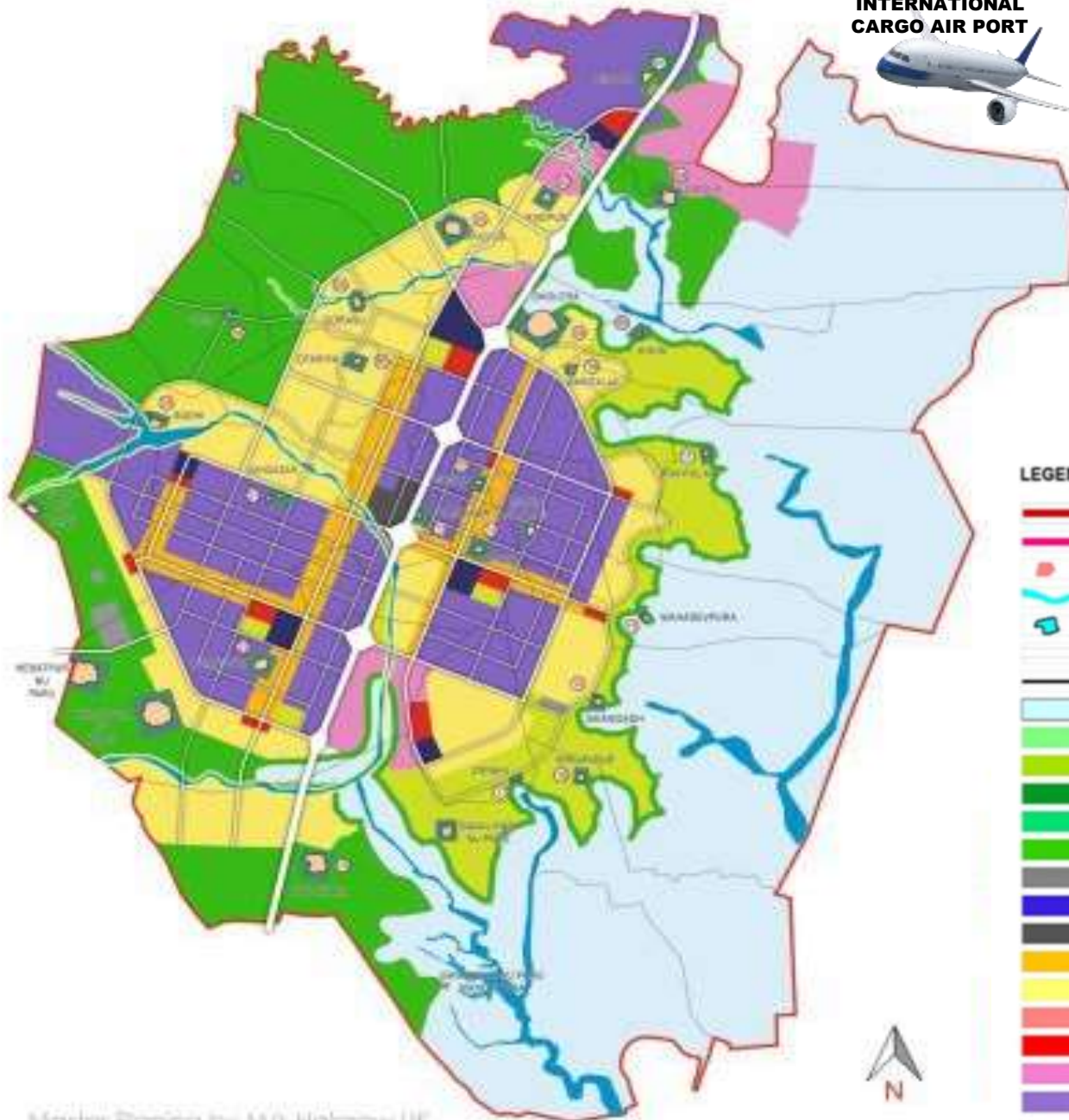
**Boosting India's aerospace sector with:**

-  **15,000** high skilled jobs
- 10,000** indirect jobs in the next 10 years

 **Transport capacity** Up to **71** Troops  **50** Paratroops **5** Standard pallets **24** Healthcare units



# INTERNATIONAL CARGO AIR PORT

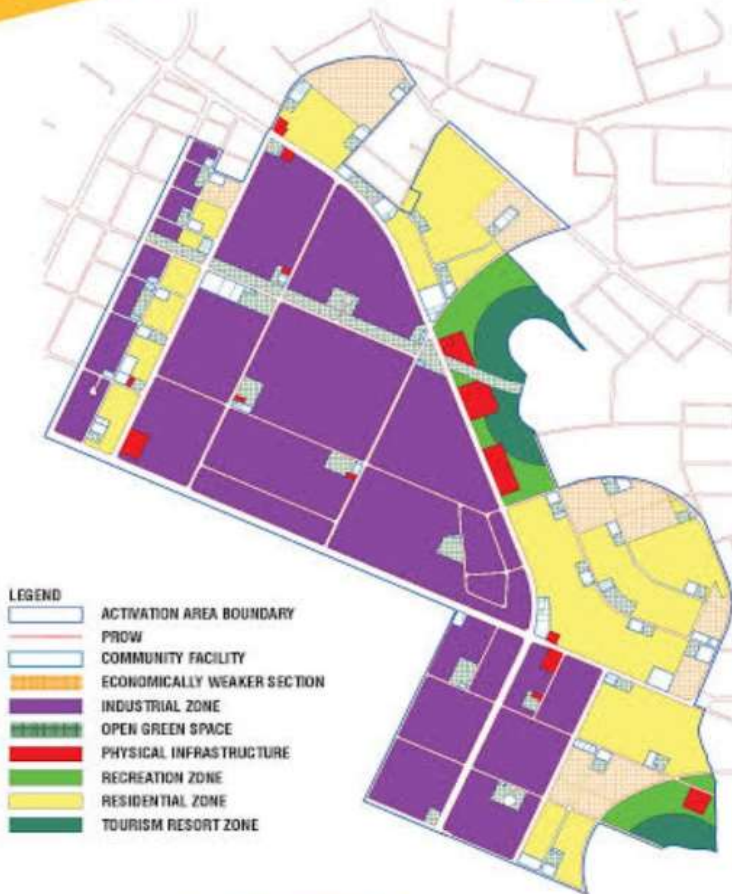


## LEGEND

- DSIRDA BOUNDARY
- T P SCHEME BOUNDARY
- GANTAL
- RIVER / CANAL
- TALAV / LAKE
- DP PROPOSED ROADS
- T P SCHEME ROADS
- COASTAL REGULATION ZONE
- GREEN SPACE
- RECREATION SPORTS AND ENTERTAINMENT ZONE
- TOURISM: RESORTS
- VILLAGE BUFFER
- AGRICULTURE ZONE
- STRATEGIC INFRASTRUCTURE ZONE
- CITY CENTRE
- LOGISTICS
- HIGH ACCESS CORRIDOR
- RESIDENTIAL ZONE
- SOLAR PARK
- PUBLIC FACILITIES ZONE
- KNOWLEDGE AND I.T. ZONE
- INDUSTRIAL ZONE

# ACTIVATION AREA & LINEAR DEVELOPMENT PLAN

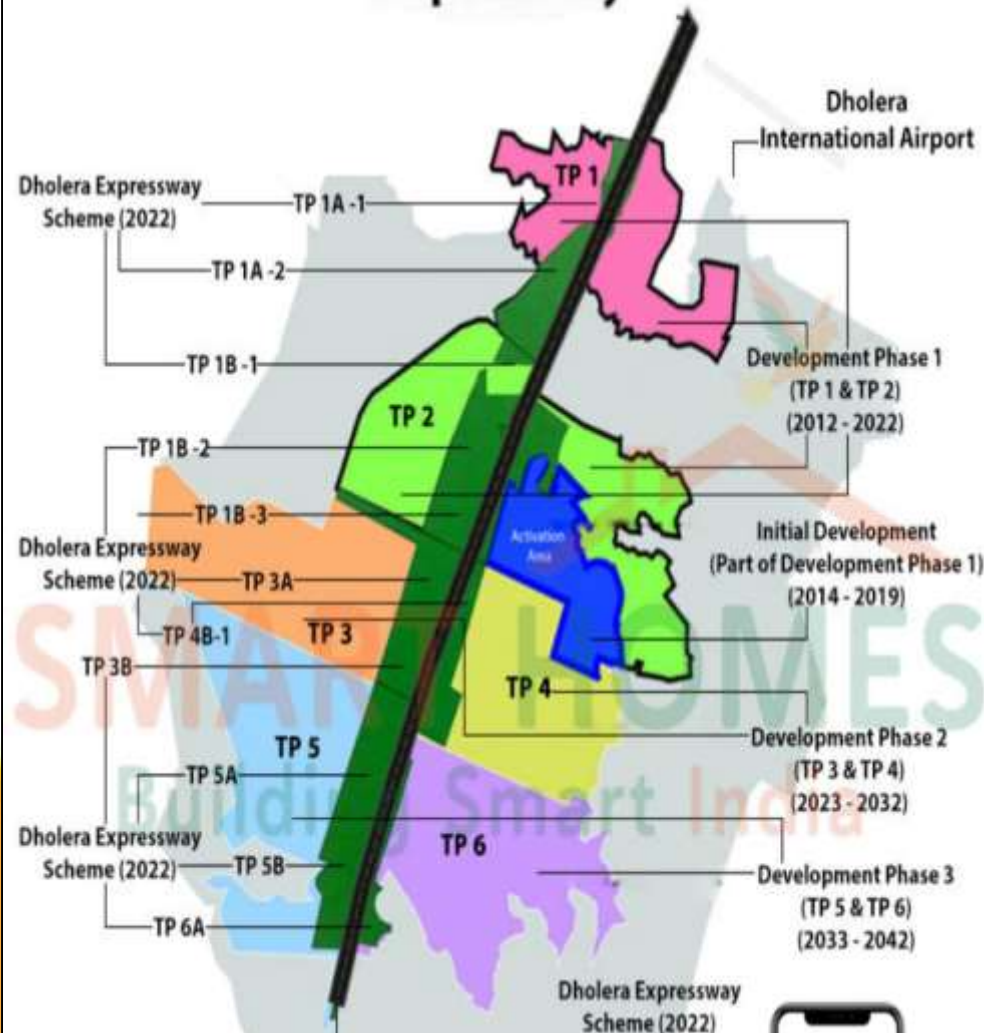
## LAND USE PLAN OF ACTIVATION AREA



- LEGEND**
- ACTIVATION AREA BOUNDARY
  - PROW
  - COMMUNITY FACILITY
  - ECONOMICALLY WEAKER SECTION
  - INDUSTRIAL ZONE
  - OPEN GREEN SPACE
  - PHYSICAL INFRASTRUCTURE
  - RECREATION ZONE
  - RESIDENTIAL ZONE
  - TOURISM RESORT ZONE



## Ahmedabad-Dholera-Bhavnagar Expressway





DEPARTMENT FOR PROMOTION OF  
INDUSTRY AND INTERNAL TRADE  
MINISTRY OF COMMERCE & INDUSTRY  
GOVERNMENT OF INDIA

# INVEST IN THE FUTURE

## NATIONAL INDUSTRIAL CORRIDOR DEVELOPMENT PROGRAMME

India's pioneering infrastructure inline with PM GatiShakti programme  
with plug & play model converging next-generation technologies.



### INVEST NOW

Land Available

 Industrial **2636** Acre  Other Use\* **3334** Acre

\*Commercial/Residential/Institutional

Available Plots Size

**1000 sqm.-332 Acre**

Flexible payment option,  
Discount for earlybird/anchor investors

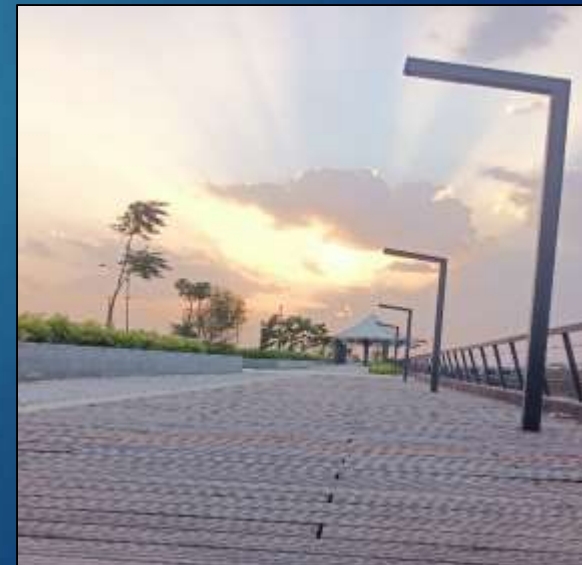
 Land Allotted  
**851 Acre**

 Investment Mobilised  
**16760 Crore**





# Artificial Canal ( Actual Images )



# SITE VISIT ACTUAL Images



# SITE VISIT ACTUAL Images



# SITE VISIT ACTUAL Images

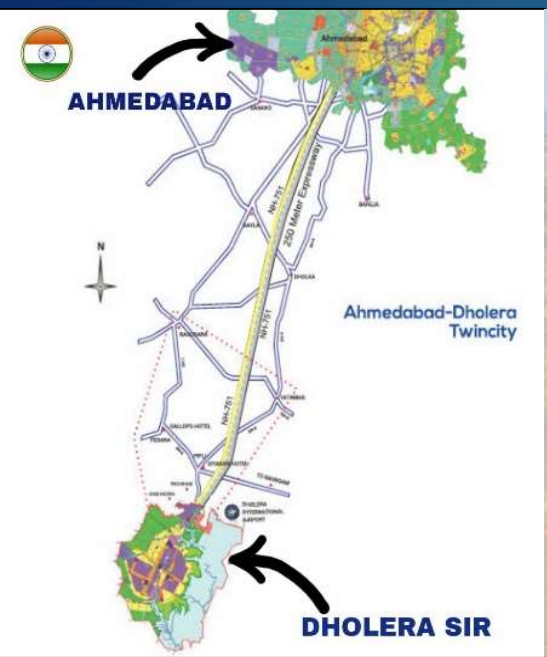
## ABCD Building



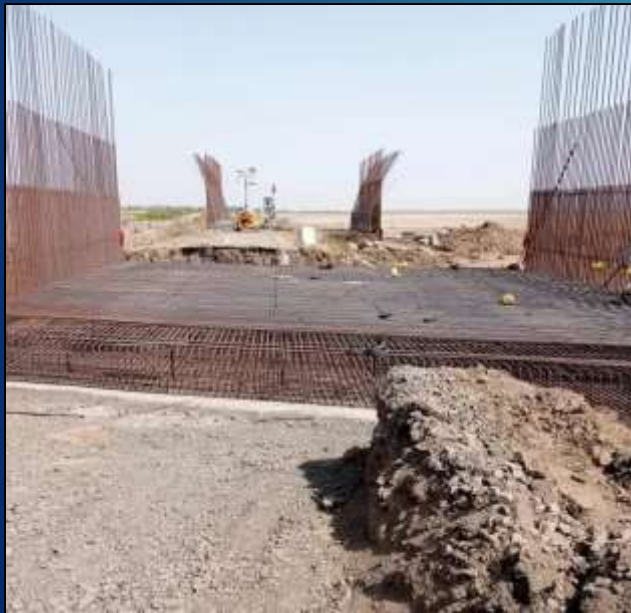
## Ahmedabad To Dholera EXPRESS WAY (Actual Image)



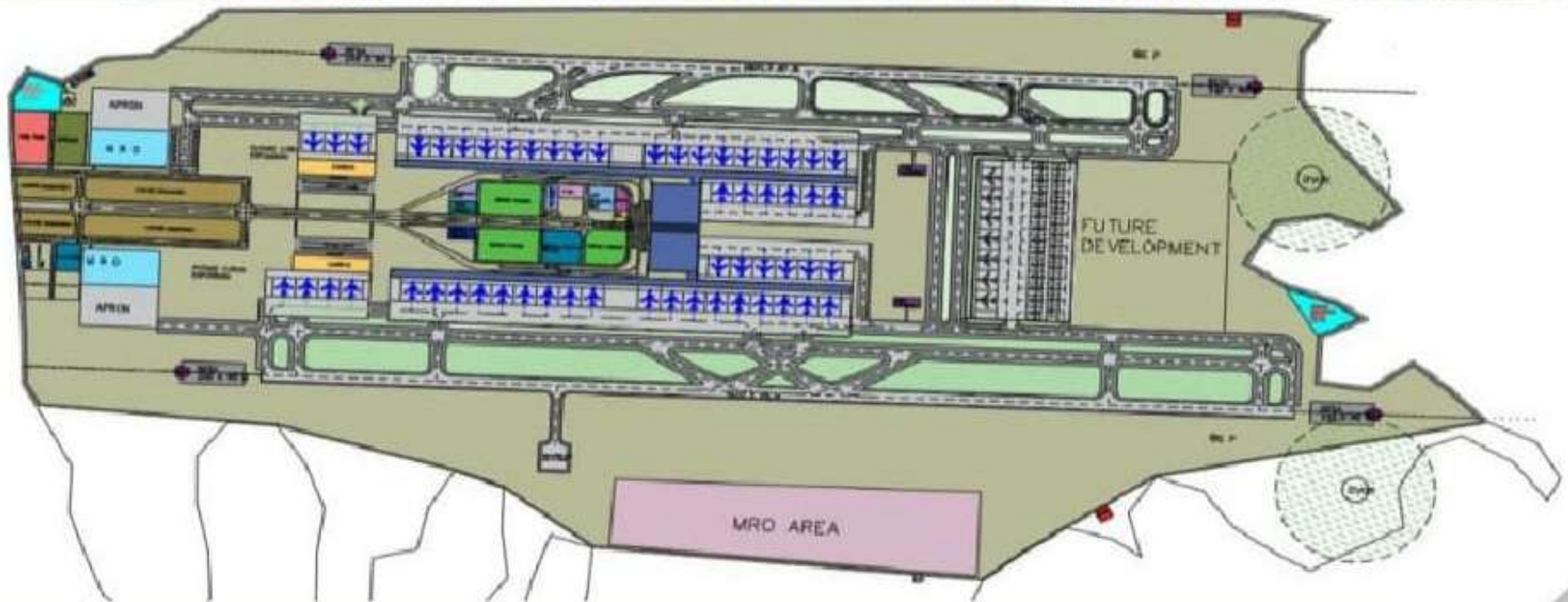
# AHMEDABAD - DHOLERA EXPRESS HIGHWAY work started



# INTERNATIONAL AIRPORT work started in DHOLERA SIR



# INTERNATIONAL AIRPORT DHOLERA SIR



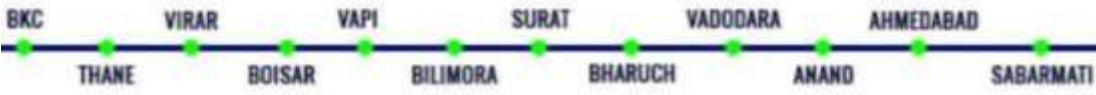
# MUMBAI TO AHMEDABAD FOR **DHOLERA S.I.R.**

## High Speed Rail Project (Bullet Train)

### Between Ahmedabad and Mumbai



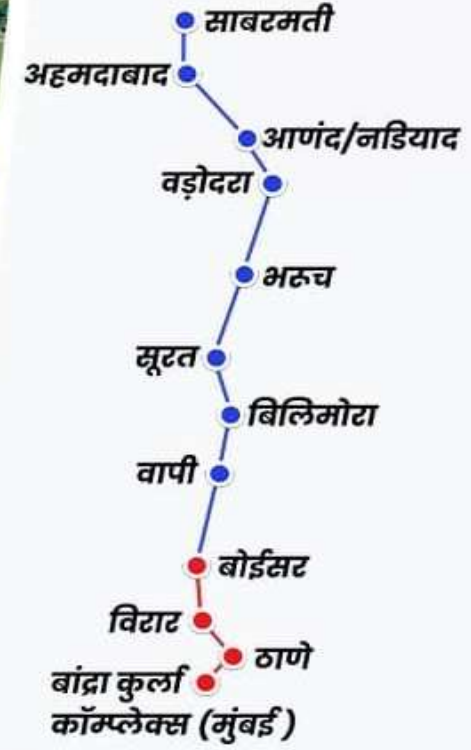
### PROPOSED HALTS:



**VANDE BHARAT**  
<http://www.vande Bharat express.in/>



# दिन-रात चल रहा है बुलेट ट्रेन का कार्य



निर्माणाधीन  
**आणंद / नडियाद**  
स्टेशन



औसत समय : 2 घंटे

मुंबई से अहमदाबाद

508 कि. मी.

अधिकतम परिचालन गति

320 कि. मी. / प्रति घंटा

स्टेशन : 12

# MUMBAI - AHMEDABAD BULLET TRAIN



**SURAT HSR STATION SITE - DECEMBER 2020**



**SURAT HSR STATION SITE - DECEMBER 2022**



**THEN FEBRUARY 2022**



**NOW FEBRUARY 2023**

THE TIMES OF INDIA

TIMES CITY

THE TIMES OF INDIA, AHMEDABAD WEDNESDAY, DECEMBER 31, 2014

Canada to invest ₹6k cr in Dholera SIR

Partner Country To Invest in Roads, Other Infra

Rupil Dave@timesgroup.com

Gandhinagar: A key country partner in the 7th Vibrant Gujarat Global Investors Summit, Canada, has proposed to invest Rs 6,000 crore in the Dholera Special Investment Region (SIR). Canada Trade Commissioner and Gujarat government will sign a formal Expression of Interest (EOI) at the upcoming Vibrant Summit.

Canada's John Baird, minister of foreign affairs and two other ministers, along with senior government officials have also confirmed participation at the summit. Sources close to the development said: "The Canada trade commissioner will sign an MoU with Gujarat government on behalf of various com-



The venue being readied to host the mega summit

panies, for the development of key infrastructure projects at Dholera SIR. It will invest in developing roads and other basic infrastructures. The Canada Trade high Commission will sign MoU for Rs 6,000 crore of investments. Several Canadian com-

panies are also keen to invest in defense, manufacturing and other sectors. Government of India's DMICDC (Dholi Mumbai Indus-trial Corridor Development Corporation) has also committed to invest a whopping Rs 3,000 crore at one

VIBRANT SUMMIT '15

Cops to host tech summit on Jan 2

The state home department and police department will host a day-long National Traffic Technology Summit at YMCA Club on January 2 as a pre-Vibrant Gujarat event. Police officials said they will explore collaborations with institutes and exhibitors at the summit but are not expecting any MoUs. The state cops told media on Tuesday that the three-tier conference agenda includes 'Smart Traffic Management, Smart Traffic Enforcement and Smart Accident Investigation'. "Four IPS officers have been part of the managing committee. A number of issues related to the current traffic scenario and probable solutions will be discussed," said an official.

₹1,665cr Gujarat-Rlys MoU in pipeline

Gujarat Government and the ministry of railways' Rail Vikas Nigam Ltd (RVNL) are also likely to sign an MoU for the Ahmedabad regional rail project. A joint venture company of the two will invest Rs 1,665 crore in the first phase, connecting Ahmedabad to periphery towns like Sanand, Kalol, Virangam, etc.

to boost the Dholera Special Region (DSIR) which is a key project in the DMIC. DMICDC and Gujarat government have decided to form a new SPV to expedite the project. If sources close to the development for its believed, more than MoU's worth more than Rs 50,000 crore are expect-

ed for investment in the Dholera SIR at the upcoming summit. At the 2009 Vibrant summit, three investors had announced investments of Rs 1 lakh crore, but they didn't turn up. Now, after DMICDC's direct involvement in the project, it is expected that the project will get a new lease of life.

ગુજરાત/અમદાવાદ

26/12/2020

divyabhaskar.com

દિવ્ય ભાસ્કર, અમદાવાદ, શનિવાર, 26 ડિસેમ્બર, 2020

6

હવે ભારતીય વિદ્યાર્થીઓને મેડિકલ અભ્યાસ માટે વિદેશ નહીં જવું પડે, અહીં જ વિદેશી યુનિવર્સિટીમાં એડમિશન મળશે

ઓક્સફોર્ડ, કેમ્બ્રિજ અને યેલ જેવી યુનિ.ઓ ગુજરાતમાં આવશે

ધોલેરામાં સાઉથ એશિયાનો પ્રથમ સ્પેશિયલ એજ્યુકેશન રિજિયન બનશે, એક જ સ્થળે વિશ્વના તમામ કોર્સનો અભ્યાસ થઈ શકશે

ગુજરાતના ધોલેરામાં 5000 એકર જેટલા વિશાળ વિસ્તારમાં સાઉથ એશિયાનો પહેલો સૌથી મોટો સ્પેશિયલ એજ્યુકેશન રિજિયન બનશે જેમાં વિશ્વની શ્રેષ્ઠતામ યુનિવર્સિટીઓ જેવી કે ઓક્સફોર્ડ, કેમ્બ્રિજ અને યેલ જેવી સંસ્થાઓ પોતાના કેમ્પસ અહીં સ્થાપશે અને હાલ દુનિયામાં ઉપલબ્ધ એવાં લગભગ તમામ અભ્યાસક્રમો અહીં સેરેન્ડા વેન્ચર્સ નામની ભારતની સૌથી મોટી એજ્યુકેશન ઇન્ફ્રાસ્ટ્રક્ચર ફંડ સંસ્થા સાથે

એમઓયુ કર્યા છે, તે રોકડ આ મોટું એજ્યુકેશન સેન્ટર બનાવવા જઈ રહ્યું છે. સૌથી મોટી વિશેષતા આ એજ્યુકેશન રિજિયનની એ રહેશે કે અહીં વિદેશી મેડિકલ કોલેજ્સ પણ આવશે. ગુજરાત અને ભારતના વિદ્યાર્થીઓને અહીં મેડિકલ સીટ ઓછી હોવાથી રશિયા, ચીન કે અન્ય દેશોમાં જવું પડે છે, તેવું કોમન ઇન્ફ્રાસ્ટ્રક્ચરમાં વિદ્યાર્થીઓ માટે હોસ્ટેલો, સ્પોર્ટ્સ કોમ્પ્લેક્સ, લાયબ્રેરી, રીજિયોશન ઝોન, શોપિંગ અને ઘણી બધી સુવિધાઓ ઉપલબ્ધ હશે.

આ સ્પેશિયલ એજ્યુકેશન રિજિયન શરૂઆતમાં 1000 એકરમાં પથરાયેલું હશે અને તેના માટે 5000 એકર જેટલો વિશાળ વિસ્તાર અંકિત કરવામાં આવ્યો છે. તેની અંદર વિવિધ વિભાગોમાં યુનિવર્સિટી ડિસ્ટ્રીક્ટ, સ્કૂલ ડિસ્ટ્રીક્ટ, ડિસ્કવરી ડિસ્ટ્રીક્ટ, ઇનોવેશન ડિસ્ટ્રીક્ટ, ઉપરાંત કોમન ઇન્ફ્રાસ્ટ્રક્ચરમાં વિદ્યાર્થીઓ માટે હોસ્ટેલો, સ્પોર્ટ્સ કોમ્પ્લેક્સ, લાયબ્રેરી, રીજિયોશન ઝોન, શોપિંગ અને ઘણી બધી સુવિધાઓ ઉપલબ્ધ હશે.

સરકારી તિજોરી પર ભારણ નહીં આવે

એમેરિકા-યુરોપ જેવું એજ્યુકેશન હબ બનશે

મેડિકલ, એન્જિનિયરિંગથી માંડીને વિશ્વના તમામ કોર્સ માટેની જરૂરી તમામ સુવિધા જેવી કે લોસ્પિટલો, લેબોરેટરી, રીસર્ચ, જેની સુવિધાઓ અહીં ઉપલબ્ધ હશે. વિશાળ કેમ્પસમાં અહીં આવનારા સમયમાં વિશ્વની 100 શ્રેષ્ઠતામ યુનિવર્સિટીઓ અહીં આવશે તેવું અમારું આયોજન છે. જેને યુનિવર્સિટીના નિયમો પ્રમાણે વિદ્યાર્થીઓને અહીંથી શિક્ષણ, પ્રમાણપત્રો અને પડવોનો મજરો. પણ માત્ર ગુજરાત કે ભારત જ નહીં પરંતુ આમાં સાઉથ એશિયાના વિદ્યાર્થીઓ માટે આ એક શ્રેષ્ઠ તક હશે, કારણ કે એક જ સ્થળે આવાં એજ્યુકેશન હબ આ ભેગમાં નથી કે જે અમેરિકા અને યુરોપના દેશોમાં છે. જજ સમીત છાબરા, મેનેજિંગ પાર્ટનર, સેરેન્ડા

આવનારા સમયમાં વિશ્વની 100 શ્રેષ્ઠતામ યુનિવર્સિટીઓ આ કેમ્પસમાં આવી શકે તેવું આયોજન સરકારી તિજોરી પર ભારણ નહીં આવે. એમએમવી વિજય ડ્રુપાણીએ આ પ્રકારના એજ્યુકેશન હબની ઉત્કૃષ્ટ રાષ્ટ્રીય સ્તી તે આવનારાં વર્ષમાં પૂર્ણ થશે. જમનોજ કુમાર દાસ, મુખ્યમંત્રીના મહાસચિવ

# TOURISUM DEVELOPMENT IN STATE

Statue of unity



182 mtr hight  
Biggest statue

finished

S.V.Patel Stadium



110000 seats  
Biggest Stadium

finished

Dholera SIR



920 sq.KM  
Biggest green field  
smart city

in progress

# “LOTHAL” INDUS VELLAY CIVILIZATION



today's plan

tomorrow's success



New Era  
DEVELOPERS

Real Estate | Plots | Infrastructure | Development

**PHASE - 4  
PIPALI**

**PHASE - 12  
RAHATALAV**

**PHASE - 13  
SHELA**

**PHASE - 5  
KAMIYANA**

**PHASE - 9  
SHELA**

**PHASE - 7  
PIPALI**

**PHASE - 8  
SHELA**

**JV  
PROJECTS  
2018 to 2020**

**( JV )  
GREENTECH  
FEDRA**

**DREAM CITY  
KHARAD**

**OUR  
PROJECTS**

**SHIVNERI  
OTTARIYA**

**AJINKYTARA  
RATANPUR**





द्वारकस्य  
सैणारि प्रखरुष्य

रायगड

प्रतापगड

तोरणा

जंजिरा

पुरंदर

सिंहगड

पन्हाळा

प्रबळगड

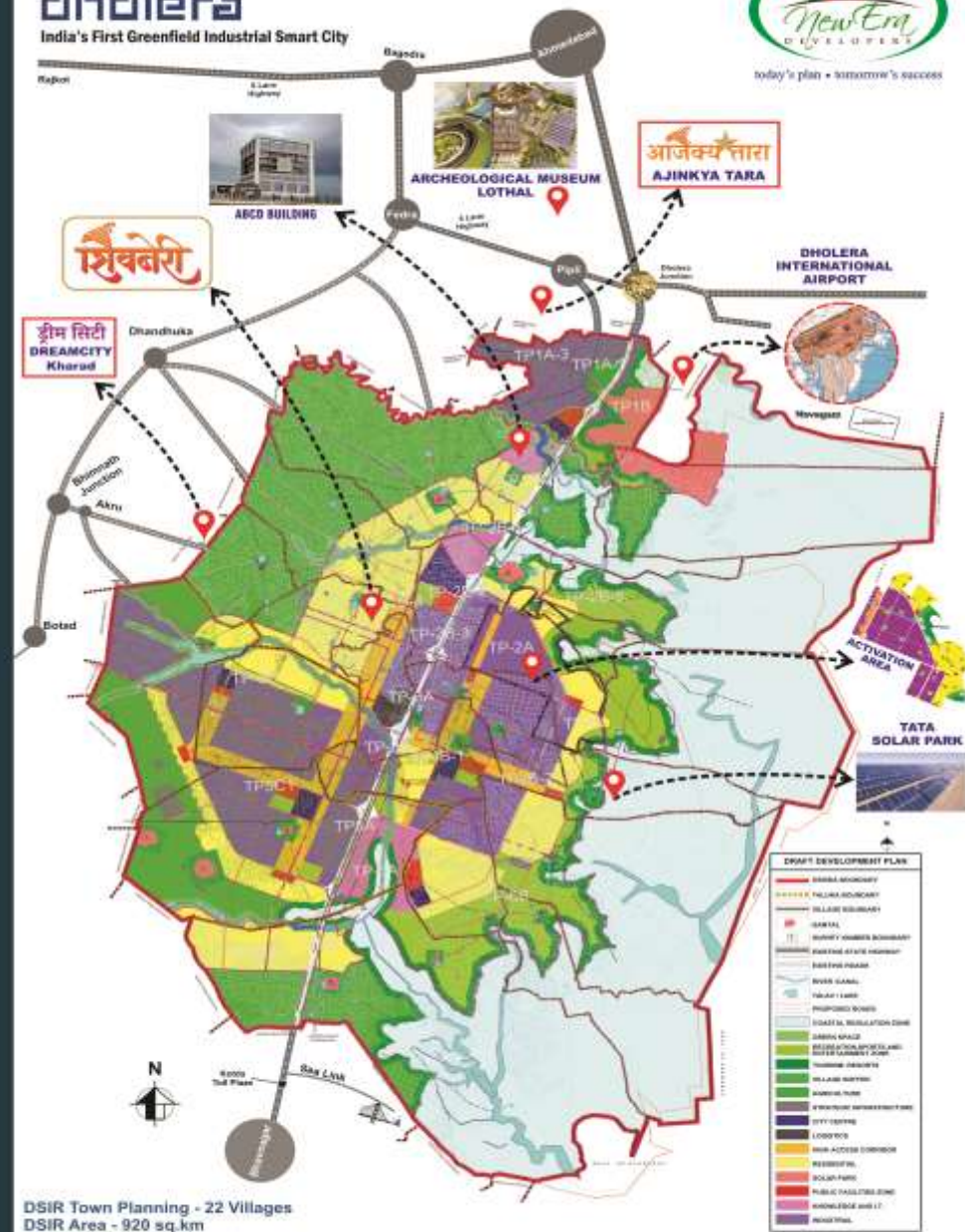
Real Estate Investment Opportunity in DHOLERA Smart City

# dholera

India's First Greenfield Industrial Smart City



today's plan • tomorrow's success



# Dream City

Near by TP2-Dholera SIR

RESIDENTIAL PLOTS @ KHARAD VILLAGE  
RESURVEY NO - 1438



Area Sq. Yard Carpet	Area Sq. Yard SBA
50	87

## DEVELOPMENT HIGHLIGHTS

- Project Boundary
- Electricity
- Garden
- Internal Road
- Water Connection
- Plot Demarcation



**SAFE & SECURED INVESTMENTS IN PROPERTY NEAR BY DHOLERA SIR TP-2**

**SPOT REGISTRY | NA/NOC-TITLE CLEAR & PLAN PASS**

**RESIDENTIAL PLOTS**

**Dholera SIR-GUJRAT (Special Investment Region) NEAR BY PROJECT**

**VILLAGE : KHARAD NEW SURVE NO : 1438 NEAR BY DHOLERA SIR (500 mtr.)**

- ◆ **10% Extra For Corner Plot**
- ◆ **5% Extra For Garden Plot**

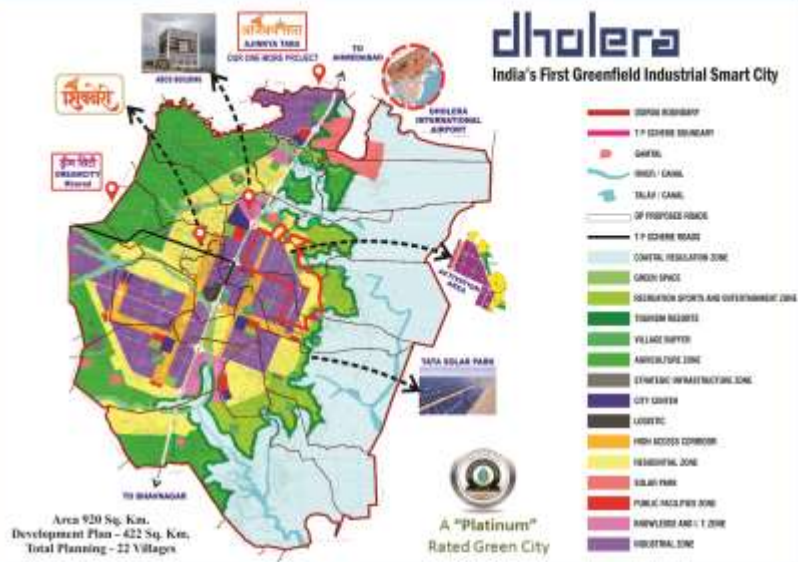
**SBA : 783 Sq. ft.**  
**Carpet : 450 Sq. ft.**

**PLOT COST**  
**Rs.: 3,50,000 /-**

**Development Cost**  
**64/- Sq. ft.**

**St. Duty / Reg. and 7/12 charges as per Govt. Norms**





# शिवनेरी

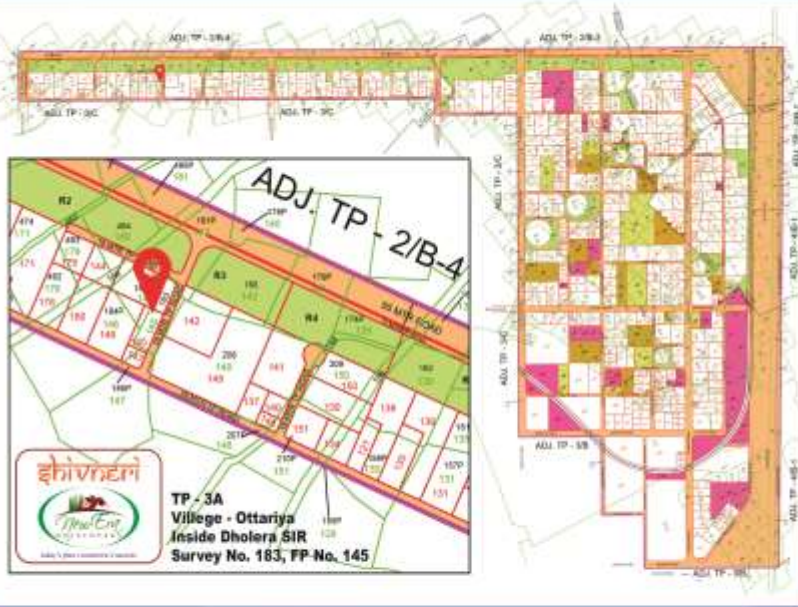
## PROJECTS AMENITIES

1. Project Boundary wall.
2. Entrance Gate.
3. Security Cabin.
4. CCTV Camera in Common Area.
5. Street lights.
6. Landscaping in COP area.
7. Children Play Area.
8. Senior Citizen Area.
9. Internal Road with Roadside Plantation.
10. Underground Water Pipeline till Plot Boundary.
11. Underground Electric line till Common Electric Junction.
12. Underground Sewage line till Plot Boundary.
13. Underground ICT duct till Plot Boundary.
14. Soil Filling up to 1 meter below from Road Top Level.
15. Project Developers will maintain the project 2 year beyond the day of completion of infrastructure work of its part.

Final Plot Area	- 4856.2 Sq. Mts.
Common Open Plot Area	- 493 Sq. Mts. (10.15%)
Total Road Area	- 1057.2 Sq. Mts. (21.77%)
Total Open Area	- 1550.2 Sq. Mts. (31.92%)



Plot No.	Width	Length	Sq mt Carpet	Sq mt SBA	Sq Yd Carpet	Sq Yd SBA	Sq ft Carpet	Sq ft SBA
1	14.25	14.10	201	265	240	352	2163	3165
2	14.25	14.10	201	265	240	352	2163	3165
3	28.50	13.50	385	507	460	700	4141	6300
4	11.00	21.00	231	304	276	404	2486	3638
5	11.00	22.50	248	326	296	433	2664	3898
6	11.60	17.25	200	263	239	350	2154	3152
7	11.60	17.25	200	263	239	350	2154	3152
8	11.60	17.25	200	263	239	350	2154	3152
9	11.60	17.25	200	263	239	350	2154	3152
10	11.00	22.50	248	326	296	433	2664	3898
11	11.00	21.00	231	304	276	404	2486	3638
12	28.50	13.50	385	507	460	700	4141	6300
13	14.25	14.10	201	265	240	352	2163	3165
14	14.25	14.10	201	265	240	352	2163	3165



All Amenities Images are representative only, actual amenities may vary.

**10% Extra For Corner Plot.**  
**5% Extra For Garden Plot.**

\* This is not a final plan pass layout. It may vary in final permissions.

रविवार, दि. 12/03/2023

**आजिंक्य तारा**  
**AJINKYATARA**

**Coming Soon**

Milestones From Here.....

- International Airport
- Ahmedabad Dhuletra expressway
- Metro Station
- Dhuletra SIR
- Shree KashiBhanjan Dev Kankumanji Temple
- International Lethal (Indus Valley civilization) museum.

**MORE INQUIRY**  
**88280 90745**

"ए न्यू एरा डेवलपर्स" ने एक नए प्रोजेक्ट "अजिंक्य तारा" के भूमि पूजन और बोर्ड का अनावरण कार्यक्रम संपन्न किया।



**INDIA'S OWN GLOBAL SMART CITY**  
**LIKE SINGAPUR, PARIS, WASHINGTON & DUBAI.**

## dholera

India's First Greenfield Industrial Smart City

Area: 422 Sq. Km.  
 Development Plan - 422 Sq. Km.  
 Total Planning - 22 Villages

A "Platinum"  
 Rated Green City

- BORDER BOUNDARY
- TYP SCHEME BOUNDARY
- CANAL
- RIVER / CANAL
- TALK / CANAL
- UP IMPROVED ROADS
- TYP SCHEME ROADS
- ZONAL REGULATION ZONE
- GREEN SPACE
- RECREATIONAL SPACES AND ENTERTAINMENT ZONE
- TOWNSHIP RESIDERS
- VILLAGE BUFFER
- AGRICULTURE ZONE
- STRATEGIC INFRASTRUCTURE ZONE
- CITY CENTER
- LOGISTIC
- HIGH ACCESS CORRIDOR
- RESIDENTIAL ZONE
- SOLID PARK
- PUBLIC FACILITY ZONE
- KNOWLEDGE ZONE - I, II, III
- INDUSTRIAL ZONE

### A NEW ERA DEVELOPERS (MUMBAI)

आजिंक्य तारा

AJINKYATARATA

New Survey No. 292  
 (Old Survey No. 100/1)  
 At : Ratanpur,  
 Tal.: Dhanduka  
 Dist.: Ahmedabad

New Era  
 DEVELOPERS

# The FUTURE is HERE

### Amenities of AJINKYATARATA

<b>Main Gate</b> 	<b>Boundary Wall</b> 	<b>Statue of Chhatrapati Shivaji Maharaj</b> 	<b>Fountain</b> 
<b>Plot Boundary</b> 	<b>Joggers Park</b> 	<b>Children Park</b> 	<b>Senior Citizen Park</b> 
<b>Bungalow</b> 	<b>Twin Bungalows</b> 	<b>Row House</b> 	<b>Commercial</b> 

#### AJINKYATARATA PROJECT HIGHLIGHTS

- Next to GETCO 400 kv Solar Park
- 15 Min. from Dholera SIR
- 10 Min. from Metro Station
- 15 Min. From Dholera SIR International Airport
- 10 Min. from Ahmedabad Dholera Expressway
- 05 Min. from Shree Kashtbhanjan Dev Hanumanji Temple
- 30 Min. from Upcoming International Lotthar Museum

A NEW ERA DEVELOPERS  
MUMBAI

Follow us

882800745

aneweradevelopers

aneweradevelopers

aneweradevelopers

www.neweradevelopers.co.in



**आजक्य तारा**  
**AJINKYATARA**



**New Survey No. 292**  
**(Old Survey No. 100/1)**  
**At : Ratanpur,**  
**Tal.: Dhanduka**  
**Dist.: Ahmedabad**

107	108 131	132 155	156 179	180 203	204 C-19	C-18	
	109 130	133 154	157 178	181 202	205 C-20		C-17
	110 129	134 153	158 177	182 201	206 C-21		C-16
	111 128	135 152	159 176	183 200	207 C-22		C-15 8
	112 127	136 151	160 175	184 199	208 C-23		C-14 9
	113 126	137 150	161 174	185 198	209 C-24		C-13 10
	114 125	138 149	162 173	186 197	210 C-25		C-12 11
	115 124	139 148	163 172	187 196	211 C-26		C-11 12
	116 123	140 147	164 171	188 195	212 C-27		C-10 13
106	117 122	141 146	165 170	189 194	213 C-28	C-9 14	
105	118 121	142 145	166 169	190 193	214 C-29		
104	119 120	143 144	167 168	191 192	215 C-30		
103							
102							
101							
	95 94	77 76	59 58	41 40	23 C-31	C-8 15	
	96 93	78 75	60 57	42 39	24 C-32	C-7 16	
	97 92	79 74	61 56	43 38	25 C-33	C-6 17	
	98 91	80 73	62 55	44 37	26 C-34	C-5 18	
	99 90	81 72	63 54	45 36	27 C-35	C-4 19	
	89	82 71	64 53	46 35	28 C-36	C-3 20	
	88	83 70	65 52	47 34	29 C-37	C-2 21	
	87	84 69	66 51	48 33	30 C-38	C-1 22	
	86	85 68	67 50	49 32	31		

- 7
- 6
- 5
- 4
- 3
- 2
- 1



today's plan • tomorrow's success



**THANK YOU**

[www.neweradevelopers.co.in](http://www.neweradevelopers.co.in)



**8828090745**